

## "A Feast of Flowers, Connecting the World Beyond the Bookshelf" 'Flower Artist' Jin-ui Ahn's Solo Exhibition <Grammar of the Garden> opens at GIST Oryong Art Hall

- Exhibits approximately 30 gorgeous yet refined colored paintings, including a 7.7-meter-tall masterpiece themed "Flower Time," "Interflower," and "Dreaming Bookshelf"... The motifs of "flowers" and "bookshelf" visualize the meaning of the relationships between nature and humanity, and between beings
- Presents a world of imagination that blossoms even in unseen places. Free admission for students and the general public from November 18 to February 27 of next year... A "Meet the Artist" event will also be held on Thursday, December 4



▲ Poster for the 2025 Oryong Art Hall 5th Exhibition

With autumn deepening, a solo exhibition by artist Jin-ui Ahn (Professor of Oriental Painting, College of Fine Arts, Hongik University) will be held at the Oryong Art Hall of the Gwangju Institute of Science and Technology (GIST, President Kichul Lim), focusing on flowers.

The exhibition, which fills the entire first and second floors of Oryong Art Hall, showcases approximately 30 colored paintings, including a 7.7-meter-long masterpiece. The works, combining vibrant colors with refined compositions, promise to offer visitors a captivating and profound visual experience.

This exhibition, designed to provide local students and citizens with an opportunity to appreciate high-quality art, will run from November 18 to February 27, 2026.

Known as the "Artist of Flowers," Jin-ui Ahn majored in Oriental Painting and received a Ph.D. in Fine Arts, specializing in Color, from Hongik University.

To date, Jin-ui Ahn has held 56 solo exhibitions both domestically and internationally, and participated in over 350 group exhibitions and art fairs, including the Gwangju Biennale, the Korea International Art Fair (KIAF), Korean Eye, and Artexpo New York. She has maintained a vibrant creative career.

She has received numerous awards, including the Special Artist Award from the Korean Art Critics Association and the Art World Artist Award. Her works are housed in major institutions both domestically and internationally, including the National Museum of Modern and Contemporary Art, the Gwangju Museum of Art, the Sungkok Art Museum, and the Blue House. Her publications include "What Color Is Your Day?" (Hongik Publishing).

Jin-ui Ahn's "flowers" are not mere representations of nature, but rather "flowers of the mind," blossoming from within the artist's inner self, revealing her unique artistic world.

Critic Ok-saeng Park praised Jin-ui Ahn's flowers, saying, "They are flowers of a reflective spirit, scattering an extremely high sensibility that transcends the phenomenal world. From a rich, mythical and symbolic flower, to a religious and noble, sacred flower, and then again to an art form that transcends all else, a solid flower is being born."

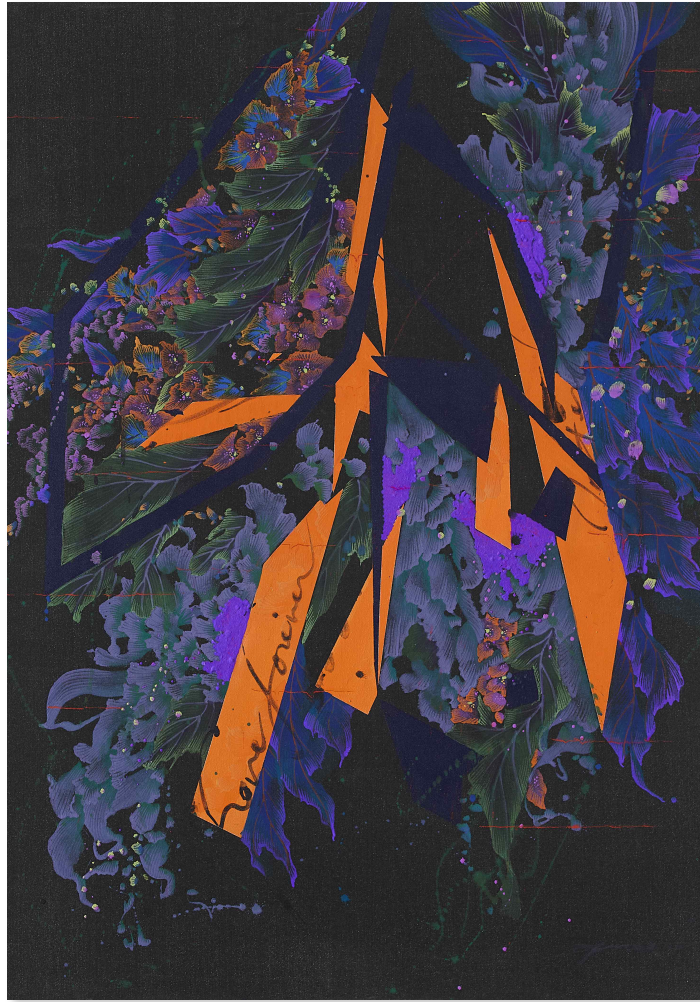
Critic Bok-gi Kim also praised Jin-ui Ahn's flowers, saying, "They have a clear identity. While there are many artists in the Korean art world who paint flowers, few exhibit such artistic power and spirit." He continued, "Jin-ui Ahn's flowers are not just flowers; they transcend mere flowers. They should be described as metaphors for 'living life.' The style of expression is also vibrant and vibrant."

In this invitational exhibition, <Grammar of the Garden>, the motif of "bookshelf," a new addition to "flowers," draws attention.

The artist states, "Walking along a flower path, I encounter a bookshelf. Looking at the bookshelf, I imagine the world unfolding beyond, and hope that a new language will blossom in my garden. Where nature and thought intersect, flowers become sentences, and sentences, in turn, become paintings."

These works, which feature both flowers and bookshelves, visually explore the relationship between nature and humanity, between beings and beings. The artist states, "All things in the world are created within the meaning of relationships," demonstrating that the meaning of existence can be redefined based on perspective and the framework of perception.

The exhibition's themes are "Time of Flowers," "Interflower," and "Dreaming Bookshelf." "Time of Flowers" depicts imaginary landscapes conjured up by encounters with nature, while "Interflower" explores the meaning of existence and relationships through the grass and flowers blooming in the cracks of city sidewalks.



▲ 2025 Oryong Art Hall 5th Exhibition Work (Interflower, 116.8 x 91 cm, mixed media and stone on canvas, 2024)

"Dreaming Bookshelf" is a series that originated from the artist's own bookshelf. True to the artist's words, "Bookshelves contain not only books, but a world beyond them," it showcases a world of imagination that blossoms even in places unseen.





▲ 2025 Oryong Art Hall 5th Exhibition Works (The Time of Flowers\_Dreaming Bookshelves, 130.3 x 97cm, mixed media with stone on canvas, 2025) Bookshelf (The Time of Flowers\_Beyond Bookshelves, 130.3 x 97cm, mixed media with stone on canvas, 2025)

This exhibition is open to the public from 9:00 AM to 6:00 PM on weekdays. A "Meet the Artist" event open to the public will also be held on Thursday, December 4th. (For inquiries about the exhibition and weekend visits: ☎ 062-715-2622)

Meanwhile, Oryong Art Hall is an exhibition space created on the first and second floors of Oryong Hall, a multipurpose building where GIST hosts events, meetings, lectures, seminars, and more to foster communication with the local community.

Starting with the first invitational exhibition in December 2022, a total of 18 exhibitions have been held, including this <Grammar of the Garden> exhibition, and as an 'open cultural and artistic space' within the research-oriented university campus, it is practicing the value of cultural sharing by sharing the emotion of art with the local community.