

GIST 2025 College student 3C1P talent growth Calendar

- Extracurricular activities/Academic event

★ 3C1P: GIST College's educational philosophy is summarized in the 3Cs of Communication, Cooperation, and Creativity and the 1P of Problem-Solving.



Categories	Program	Program content		Target students	Operating Period												Notes and comments	Selection Size (students)	Key benefits (School Support)	Departments	Contact person in charge (phone, email)	
					Jan	Feb	Mar	Apr	May	Jun	Jul	Aug	Sep	Oct	Nov	Dec						
SENDING STUDENTS ABROAD	Educational Programs Abroad	Spring semester	- UC Berkely SAP (Study Abroad Program)	Junior~Senior	Dispatch								Selection						Tuition, room, board, meals, KRW 25 million/student	International and Public Affairs Team	Ext. 2023 han6000@gist.ac.kr	
			- Mobility Program	Sophomore~Senior (within 7th semester)		Dispatch							Selection					Airfare by country (KRW 1.5 million~2.75 million)				
		Summer Term	- UC Berkely	Sophomore~Junior	Selection					Dispatch								45	Tuition, room, board, meals, fees			
			- Boston University		Selection					Dispatch								15	Tuition, room, board, meals, fees			
			- University of Cambridge		Selection						Dispatch								10			Tuition, room, board, meals, fees
		Fall semester	- Mobility Program	Sophomore~Senior (within 7th semester)	Dispatch		Selection							Dispatch					Airfare by country (KRW 1.5 million~2.75 million)			
		International Research Internship Support Program			All students	Dispatch (Winter Session)						Dispatch (Summer Session)										Airfare by country (roundtrip), visa issuance fees
EXPLORE MAJORS & LEARN MORE ABOUT THE FACULTY AND THE DEPARTMENT	Major (college) information sessions	Learn about the major curriculums, etc. for selecting major (See each department's announcement)		Freshman~Sophomore			All year round													Each College-Department	Staff in charge of each department	
	Lunch / Dinner Meeting	Faculty engagement for major exploration, department introductions (See each department's announcement)		All students			All year round (during semester)						All year round (during semester)							Each College-Department	Staff in charge of each department	
		- Department of Physical and Photon Science		All students					(Lunch)				during semester (Lunch)						Packed lunch	DPH	Ext. 6142 kimhj2956@gist.ac.kr	
		- Department of Chemistry		Senior~Sophomore			during semester (Lunch)						during semester (Lunch)						Packed lunch	DC	Ext. 6142 kimhj2956@gist.ac.kr	
		- Department of Environment and Energy Engineering		All students			during semester (Lunch)										~ 20 students	Packed lunch	College of Engineering	Ext. 6165 shinje2007@gist.ac.kr		
		- Department of Mechanical and Robotics Engineering		All students			All year round (during semester, Lunch)						All year round (during semester, Lunch)			2nd floor of the 2nd Student Center	~ 15 students per session	Packed lunch	College of Engineering	Ext. 6165 shinje2007@gist.ac.kr		
		- Department of Biomedical Science and Engineering		All students			during semester (Lunch)						during semester (Lunch)				First 30 students	Packed lunch	BMSE	Ext. 6184 whitehlm@gist.ac.kr		
	Graduate School Information Sessions	Learn about the Graduate School - Departments (See each department's announcement)		All students	All year round															Each College-Department	Person in charge of each department	
	Graduate School Open Lab	For prospective graduate students, an introduction to research areas and Lab Tours (Refer to the Graduate School Admissions website and look for announcements from each faculty and department)		Junior~Senior				3.28 (Fri.)											Each College-Department	www.gist.ac.kr/gadm/ Staff in charge of each department		
MAJOR RESEARCH EXPERIENCES	G-SURF (Summer Undergraduate Research Fellowship)	Summer training programs for graduate lab research experience		Sophomore~Senior					Selection	Eight weeks/Poster Session								Graduate Lab	~ 70 students	KRW 450,000~600,000/student	Section of Student Services	Ext. 3604 tscho5@gist.ac.kr
	Internship Program (*Individualized internships can be supported after students contact the desired professor or program individually)	Short-term internships for graduate research experience (See each department's announcement)		Sophomore~Senior	All year round												Graduate Lab		Internship stipend (varies by department)	Each College-Department	Staff in charge of each department	
		- Department of Semiconductor Engineering		Sophomore~Senior	Activities					Selection		Activities				Selection	Graduate Lab		Internship stipend, Insurance	DSE	Ext. 3752 hyunjin110@gist.ac.kr	
		- Department of Physical and Photon Science		Sophomore~Senior	Activities				Selection		Activities				Selection	Graduate Lab	~ 20 students	KRW 300,000/student	DPH	Ext. 6142 kimhj2956@gist.ac.kr		
		- Department of Chemistry		Sophomore~Junior			Activities						Activities			Graduate Lab		Undergraduate Research in Chemistry I,II,III (1 credit each)	DC	Ext. 6142 kimhj2956@gist.ac.kr		
		- Department of Materials Science and Engineering		Junior~Senior	1st/2nd activities										Selection	Graduate Lab	No more than 25 students per session	Internship stipend, housing assistance	DMSE	Ext. 2303 toto9430@gist.ac.kr		
		- Department of Mechanical and Robotics Engineering		All students				Selection	Activities						Graduate Lab		Prizes given at the results announcement	DMRE	Ext. 2383 jnryu@gist.ac.kr			
		- Department of Environment and Energy Engineering		Sophomore~Senior					Selection	Activities						Graduate Lab	~ 20 students	Certificate, research activity fee (KRW 400,000), dormitory fee, etc.	EEE	Ext. 2432 yulakim1@gist.ac.kr		
		- Department of Life Sciences		Junior~Senior	Activities				Selection	Activities					Selection	Graduate Lab	~ 20 students	KRW 400,000/student, dormitory fee	LS	Ext. 2481 soghee6474@gist.ac.kr		
CHALLENGE & CREATIVITY	Infinite Challenge	Student-led creation and production activities		All students				Selection	Selection					Presentations		RISE Bld. #215,#216	~ 20 Teams	KRW 2~3 million/group	Section of Student Services	Ext. 3601 jooyi@gist.ac.kr		
COMPETITIONS	Earth and Environmental Science Olympiad	Conducting research on a given topic and presenting findings		Sophomore~Senior	Selection									Selection		Around 20 people	Minister of Environment Award and others (KRW 2 million/4 teams, certificate, research activity fee, dormitory fee)	EEE	Ext. 2432 yulakim1@gist.ac.kr			

GIST 2025 College student 3C1P talent growth Calendar

- Extracurricular activities/Academic event

★ 3C1P: GIST College's educational philosophy is summarized in the 3Cs of Communication, Cooperation, and Creativity and the 1P of Problem-Solving.



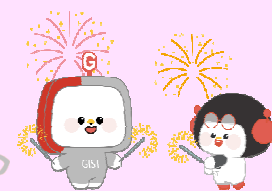
Categories	Program	Program content	Target students	Operating Period												Notes and comments	Selection Size (students)	Key benefits (School Support)	Departments	Contact person in charge (phone, email)
				Jan	Feb	Mar	Apr	May	Jun	Jul	Aug	Sep	Oct	Nov	Dec					
COMPETITIONS	Smart Convergence Materials Science and Technology Competition	Open topic (Development of future smart fusion materials) Pitching ideas	All students								Announcement and application		The Main Competition					Grand Prize KRW 1,000,000, Second Prize KRW 500,000, Honorable Mention KRW 300,000, Special Prize KRW 200,000, Round-trip transportation and accommodation support	College of Engineering	Ext. 6165 shinje2007@gist.ac.kr
	Creative Convergence Competition	AI Convergence Project Contest	All students					Announcement and application		The Main Competition							Around 10 Teams	Support for project expenses for each team, and total prize money of around KRW 10 million	Department of AI Convergence	Ext. 6361 ai@gist.ac.kr
STARTUP PROGRAMS	Entrepreneurial Support Program	Campus CEO Challenge for Students(CCS)	All students				Recruitment in March, activities from May to November (7 months)										2 teams	KRW 20 million/team		Ext. 6303 leedaseul@gist.ac.kr
		GIST Sprint for Startup(GSS)	All students				Participation Year-round activities after selection(Apr.~Mar.)										6 teams	KRW 3 million/team		Ext. 6302 eunbi8584@gist.ac.kr
		Acceleration Program	Prospective or Early-stage Entrepreneur	Ongoing basis													Individual or team	Mentoring and IR Creation Support		Ext. 6303 leedaseul@gist.ac.kr
		One-point Startup Mentoring	GIST members	Ongoing basis														Mentoring and Training		Ext. 6302 eunbi8584@gist.ac.kr
	Startup Related Activities	CUop(Company-University Cooperation)_Internship	All students	Internship progress (Winter session)			Selection (Participating Companies)	Student selection	Internship progress (Summer session)				Selection (Participating Companies)	Student selection	Internship progress (Winter session)		22 individuals	KRW 4.5 million/student		Ext. 6302 eunbi8584@gist.ac.kr
		Startup Camp							Recruitment and hold				Recruitment	Hold			individual	Lecture, Camp		
		Student Startup Club					Recruitment in April, activities from April to November (8 months)										10 teams	KRW 2 milliom/team		Ext. 6303 leedaseul@gist.ac.kr
		Startup supporters					Recruitment in April, year-round activities										3 individuals	KRW 100,000/month		
	Entrepreneurship training	Startup Mini-Schools	All students					Recruitment	Hold							Creative Space G	Individual	3D modeling, video production training, etc.		Ext. 6303 leedaseul@gist.ac.kr
		Equipment Utilization Training & Prototype Production Mentoring			Year-round program with ongoing participant recruitment													Equipment Training and Prototype Production Mentoring		
		Patent Application Education						Recruitment	Hold									-	-	-
	Startup Competitions & Networking Events	Startup Lunch Talk	All students in the Honam area										Hold				Individuals	-		-
		Startup Night	All students												Hold		Individual or team	-		Ext. 6303 leedaseul@gist.ac.kr
		Institute of Science and Technology Startup contest by Unicorn Factory(MoneyToday)										Participation			Individuals	-	Money Today	Ext. 6302 eunbi8584@gist.ac.kr		
		Joint Startup Idea Contest among Institutes of Science and Technology											Hold			Team	-		Joint Institutes of Science and Technology	
		GIST-Honam Area University Startup Idea Contest	All students in the Honam area				Recruitment	Hold								Individual or team	Total KRW 9 million/5 teams		Startup Acceleration Center	Ext. 6303 leedaseul@gist.ac.kr
		AI&IoT Makerathon Competition	All students										Recruitment	Hold		Creative Space G	Team	Total KRW 2.7 million/5 teams		
		GIST Investment IR Competition												Hold		Individual or team	Total KRW 5.5 million/6 teams			
JOB SEARCH	Job readiness support	Work Study	All students	Selection	Group Study					Recruit ment	Group Study					Around 7 teams	No more than KRW 150,000 per group per semi-annual period	Section of Student Services	Ext. 3607 career@gist.ac.kr	
	Specialized Training for Large Companies	Personal statement critiques (first come, first served), special lectures about interviews	All students		Selection and Participation					Selection and Participation						All hopefuls	Includes 1:1 consulting			
	Public Employment Specialization	Personal statement critique (first come, first served), special lectures about interviews, NCS	All students			Selection and Participation						Selection and Participation				All hopefuls	Includes 1:1 consulting			
	Senior Career Mentoring	Work and start a business domestically and internationally	All students				Announcement and holding (3 times)									All hopefuls	Job descriptions and Q&A			
	Providing employment information	Job Planet	All students	All year round													All hopefuls			Free access to paid services
SMALL CREATIVE ACTIVITIES	Group Creativity	Own group activity	All students	All year round(Use after prior reservation for the Group Innovation Studio)												Group Innovation Studio	All hopefuls	Provide space for group activities	Section of Student Services	Ext. 3603 hanaro@gist.ac.kr

■ The 3C1P Talent Growth Support Calendar aims to provide an overview of all programs, and detailed schedules may vary depending on internal and external circumstances. Please refer to each respective department for specific details on individual programs

GIST 2025 College student 3C1P talent growth Calendar

- Culture/Companionship

★ 3C1P: GIST College's educational philosophy is summarized in the 3Cs of Communication, Cooperation, and Creativity and the 1P of Problem-Solving.



Categories	Program	Program Content	Target Students	Operating Period												Selection Notes	Key benefits (School Support)	Departments	Contact person in charge (phone, email)	Other notes	
				Jan	Feb	Mar	Apr	May	Jun	Jul	Aug	Sep	Oct	Nov	Dec						
STUDENT EVENTS (FESTIVALS, ETC.)	Student Festival (LUMIERE)	Student unity and festival event	All students				Plan							Hold					Section of Student Services Student Association Club Association	Ext. 3605 yujin0301@gist.ac.kr	Consult student government
	Stadiums	Sports and club performances at all IST	All students										Plan	Hold (GIST)		Applicant		Section of Student Services Club Association			
	Summer cultural events	Club performances, hands-on booths, and more to bring everyone together	All students				Plan	Hold										Section of Student Services GIST Cluture&Event Committee	Ext. 3605 yujin0301@gist.ac.kr		
	House Thrift Shop	Immediately following the opening of the class, the entire team will be able to share the necessary thrift items	All students		Plan	Hold												Section of Student Services House Association	Ext. 3606 soopark@gist.ac.kr		
	House Spring "Cherry Blossom Event"	Bonding events	All students			Plan Hold															
	House Summer 'Lucky House'	Unity through a variety of minigames	All students				Plan	Hold													
	House Autumn "Night Market"	Club performances, hands-on booths, and more to bring everyone together	All students									Plan	Hold								
CULTURAL EXCHANGES	Culture Night	International student-led multicultural events	All students								Plan		Hold					International and Public Affairs Team (IPAT)	Ext. 6256 yeonjinh@gist.ac.kr		
	Doran Doran (Language Exchange Program)	Promoting interaction between Korean and international students Connect with your native language and culture with Korean students	All students									Execution				~20 people		Language Education Center	Ext. 6652 yoonseo77@gist.ac.kr		
MENTORING & VOLUNTEER SERVICES	Companion Programs	Foster cultural exchange among international members	All students				Selection	Program progress										IPAT	Ext. 6256 yeonjinh@gist.ac.kr		
	NIA World Friends ICT Corps	Overseas volunteer service such as IT and Korean culture education	All students				Announce -ment	Selection	Education	Dispatch						4 members /Team, ~5 teams	Round-trip flight fees, local living expenses, etc.	IPAT	Ext. 6253 kcsda@gist.ac.kr		
	Traveling Science Camps	Science education for rural youth	All students (PIUM)						Selection	Hosting		Selection	Hosting					IPAT, PIUM	Ext. 2026 yeongjlee@gist.ac.kr		
	LAN Mentoring	Learning and advancement for middle and high school students in underserved areas	All students (PIUM)			Plan	Participation										IPAT, PIUM				
	International New Student Buddy Program	Life in Korea as an International Baccalaureate Student Adaptive support (1:1)	All students									Selection	Participation			~10 people	activity expenses, operation expenses (KRW 200,000/team)	IPAT, School of Humanities and Social Sciences (Challenge and Exploration Program)	Ext. 6254 kjsoony607@gist.ac.kr		
CLUB ACTIVITIES	Create a new club	Support for extracurricular activities	All students	All year round														Section of Student Services	Ext. 3605 yujin0301@gist.ac.kr		
						Club registration guide, Evaluation			Club funding distribution and activities												

■ The 3C1P Talent Growth Support Calendar aims to provide an overview of all programs, and detailed schedules may vary depending on internal and external circumstances. Please refer to each respective department for specific details on individual programs

