

# GIST 2024 College student 3C1P talent growth Calendar(Extracurricular activities/Academic event)

★ 3C1P: GIST College's educational philosophy is summarized in the 3Cs of Communication, Cooperation, and Creativity and the 1P of Problem-Solving.



Categories	Program	Program content	Target students	Operating Period												Notes and comments	Selection Size (students)	Key benefits (School Support)	Departments	Contact person in charge (phone, email)
				Jan	Feb	Mar	Apr	May	Jun	Jul	Aug	Sep	Oct	Nov	Dec					
SENDING STUDENTS ABROAD	Educational Programs Abroad	Spring semester - UC Berkely SAP (Study Abroad Program)	Junior~Senior	Dispatch										Selection				Tuition, room, board, meals, KRW 25 million/student	International and Public Affairs Team	Ext. 2025 stellasy0213@gist.ac.kr
		- Mobility Program	Sophomore~Senior (within 7th semester)			Dispatch								Selection		20	Airfare by country (KRW 1.5 million~2.75 million)			
		Summer Term	- UC Berkely	Sophomore~Junior	Selection				Dispatch								45	Tuition, room, board, meals, fees		
			- Boston University	Sophomore~Junior	Selection						Dispatch					15	Tuition, room, board, meals, fees			
			- University of Cambridge	Sophomore~Junior	Selection						Dispatch					10	Tuition, room, board, meals, fees			
		Fall semester	- Mobility Program	Sophomore~Senior (within 7th semester)			Selection						Dispatch					Airfare by country (KRW 1.5 million~2.75 million)		
	International Research Internship Support Program	All students	Dispatch (Winter Session)							Dispatch (Summer Session)						Airfare (roundtrip), visa issuance fees	Ext. 6258 h.irene.kim@gist.ac.kr			
EXPLORE MAJORS & LEARN MORE ABOUT THE FACULTY AND THE DEPARTMENT	Major (college) information sessions	Learn about the major curriculums, etc. for selecting major (See each department's announcement)	Freshman~Sophomore	All year round															Each School-Department	Staff in charge of each department
	Lunch / Dinner Meeting	Faculty engagement for major exploration, department introductions (See each department's announcement)	All students	All year round (during semester)						All year round (during semester)								Each School-Department	Staff in charge of each department	
		- School of Earth and Environmental Engineering	Freshman~Sophomore			during semester (Lunch)										~ 20 students	Packed lunch	SESE	Ext. 2432 yulakim1@gist.ac.kr	
		- School of Mechanical Engineering	All students	All year round (during semester, Lunch)						All year round (during semester, Lunch)				2nd floor of the 2nd Student Center	~ 15 students per session	Packed lunch	SME	Ext. 2382 sy0522@gist.ac.kr		
		- Department of Physical and Optical Sciences	All students	during semester (Dinner)					during semester (Lunch)								Packed lunch	DPH	Ext. 2223 ynnn1016@gist.ac.kr	
	- Department of Biomedical Science and Engineering	All students	during semester (Lunch)					during semester (Lunch)						First 40 students	Packed lunch	BMSE	Ext. 5312 bmse@gist.ac.kr			
Graduate School Information Sessions	Learn about the Graduate School - Departments (See each department's announcement)	All students	All year round															Each School-Department	Person in charge of each department	
Graduate School Open Lab	For prospective graduate students, an introduction to research areas and Lab Tours (Refer to the Graduate School Admissions website and look for announcements from each faculty and department)	Junior~Senior			4.5 (Fri.)													Each School-Department	www.gist.ac.kr/gadm/ Staff in charge of each department	
MAJOR RESEARCH EXPERIENCES	G-SURF (Summer Undergraduate Research Fellowship)	Summer training programs for graduate lab research experience	Sophomore~Senior					Selection	Eight weeks/Poster Session							Graduate Lab	~ 70 students	KRW 450,000~600,000/student	Student Services Team	Ext. 3620 zkfit05@gist.ac.kr
	Internship Program (*Individualized internships can be supported after students contact the desired professor or program individually)	Short-term internships for graduate research experience (See each department's announcement)	Sophomore~Senior	All year round												Graduate Lab		Internship stipend (varies by department)	Each School-Department	Staff in charge of each department
		- School of Materials Science and Engineering	Junior~Senior	1st/2nd activities											Selection	Graduate Lab	No more than 25 students per session	Internship stipend, housing assistance	SMSE	Ext. 2303 toto9430@gist.ac.kr
		- School of Mechanical Engineering	All students				Selection	Activities						Graduate Lab		Prizes given at the results announcement	SME	Ext. 2382 sy0522@gist.ac.kr		
		- School of Earth Sciences and Environmental Engineering	Sophomore~Senior					Selection	Activities						Graduate Lab	~ 20 students	Certificate, research activity fee (KRW 400,000), dormitory fee, etc.	SESE	Ext. 2446 kimhj2956@gist.ac.kr	
		- School of Life Sciences	Junior~Senior	Activities					Selection	Activities				Selection	Graduate Lab	~ 20 students	KRW 400,000/student, dormitory fee	SLS	Ext. 2481 daeun816@gist.ac.kr	
		- Department of Physical and Optical Sciences	Sophomore~Senior	Activities					Selection	Activities				Selection	Graduate Lab	~ 20 students	KRW 300,000/student	DPH	Ext. 2884 phys@gist.ac.kr	
- AI Graduate School (Department)	All students								Selection and Participation				Selection, Participation	Graduate Lab		Offer internship opportunities	AI Graduate School	Ext. 6914 hyeonheelim@gist.ac.kr		
CHALLENGE & CREATIVITY	Infinite Challenge	Student-led creation and production activities	All students				Selection	Selection						Presentations	RISE Bld. #215,#216	~ 20 Teams	KRW 2~3 million/group	Student Services Team	Ext. 3620 zkfit05@gist.ac.kr	

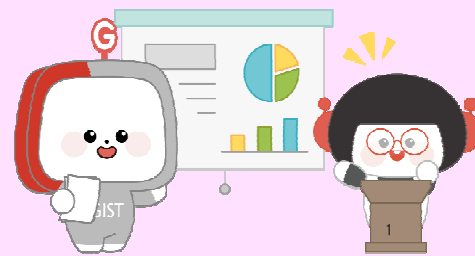
# GIST 2024 College student 3C1P talent growth Calendar(Extracurricular activities/Academic event)



★ 3C1P: GIST College's educational philosophy is summarized in the 3Cs of Communication, Cooperation, and Creativity and the 1P of Problem-Solving.

Categories	Program	Program content	Target students	Operating Period												Notes and comments	Selection Size (students)	Key benefits (School Support)	Departments	Contact person in charge (phone, email)			
				Jan	Feb	Mar	Apr	May	Jun	Jul	Aug	Sep	Oct	Nov	Dec								
COMPETITIONS	Earth and Environmental Science Olympiad	Conducting research on a given topic and presenting findings	Sophomore~Senior	Selection											Selection		Around 20 people	Minister of Environment Award and others (KRW 2 million/4 teams, certificate, research activity fee, dormitory fee)	SESE	Ext. 2446 kimhj2956@gist.ac.kr			
	Smart Convergence Materials Science and Technology Competition	Open topic (Development of future smart fusion materials) Pitching ideas	All students											Announcement and application	The Main Competition			Grand Prize KRW 1,000,000, Second Prize KRW 500,000, Honorable Mention KRW 300,000, Special Prize KRW 200,000, Round-trip transportation and accommodation support	SMSE	Ext. 2303 toto9430@gist.ac.kr			
	Creative Convergence Competition	Ping Pong Robotics Contest Campus EMS(Energy Management System) Development Contest	All students						Announcement and application		The Main Competition						Around 10 Teams	Support for project expenses for each team, 3 credits for the summer semester for participants in the [Ping Pong Robot Contest], and total prize money of around KRW 10 million	Institute of Integrated Technology	Ext. 5302 sky100w77@gist.ac.kr			
	Cagle Contest	CJ Olive Networks CTO's Cagle Contest	All students					After selection, from April to July										Conference expense support	AI Graduate School	Ext. 6914 hyeonheelim@gist.ac.kr			
STARTUP PROGRAMS	Entrepreneurship training	CUop(Company-University Cooperation)_Internship	All students	Internship progress (Winter session)			Selection (Participating Companies)	Student selection	Internship progress (Summer session)				Selection (Participating Companies)	Student selection	Internship progress (Winter session)		22	KRW 4.5 million/student		Ext. 6304 s0324zzz@gist.ac.kr			
		CUop_Convergence Capstone Design	All students			Participation (Spring semester)					Participation (Fall semester)												
	Entrepreneurial Support Program	Student Startup Club	All students	Selection(Mar.) and Participation Year-round activities after selection(Mar.)													10 teams	KRW 2 million/team		Startup Acceleration Center	Ext. 6303 leedaseul@gist.ac.kr		
		Startup supporters	All students	Selection(Feb.) and Participation													6 students	KRW 150,000/month					
		Startup Mini-Schools	All students			3 months of activity after selection(Mar.-Apr.)					3 months of activity after selection(Sep.)			Creative Space G	Personal	3D modeling, video production training, etc.							
		GIST Sprint for Startup(GSS)	All students			Participation Year-round activities after selection(Apr.-Mar.)													6 teams			KRW 3 million/team	
		Startup Idea Contest	All students				Selection	Evaluation									Individual or two-person team	KRW 7 million/4 teams					
		AI&IoT Makerathon Competition	All students											Selection	Hold	Creative Space G	4-5 person teams	KRW 1.8 million/3 teams					
	Startup Night	Introduction to networking and entrepreneurship programs	All students											Event planning	Hold	Startup Acceleration Center		Co-hosting a student entrepreneurship organization		Ext. 6303 leedaseul@gist.ac.kr			
	GIST Investment IR Competition	Fundraising and networking	All students											Event planning	Hold								
JOB SEARCH	Job readiness support	Work Study	All students	Selection	Group Study					Recruitment	Group Study						Around 7 teams	No more than KRW 150,000 per group per semi-annual period		Student Services Team	Ext. 3607 career@gist.ac.kr		
	Specialized Training for Large Companies	Personal statement critiques (first come, first served), special lectures about interviews	All students		Selection and Participation				Selection and Participation								All hopefuls	Includes 1:1 consulting					
	Public Employment Specialization	Personal statement critique (first come, first served), special lectures about interviews, NCS	All students			Selection and Participation					Selection and Participation						All hopefuls	Includes 1:1 consulting					
	Senior Career Mentoring	Work and start a business domestically and internationally	All students			Announcement and holding (3 times)											All hopefuls	Job descriptions and Q&A					
	Providing employment information	Job Planet	All students	All year round													All hopefuls	Free access to paid services					
SMALL CREATIVE ACTIVITIES	Group Creativity	Own group activity	All students	All year round(Use after prior reservation for the Group Innovation Studio)												Group Innovation Studio	All hopefuls	Provide space for group activities	Student Services Team	Ext. 3620 zkfit05@gist.ac.kr			

■ The 3C1P Talent Growth Support Calendar aims to provide an overview of all programs, and detailed schedules may vary depending on internal and external circumstances. Please refer to each respective department for specific details on individual programs



# GIST 2024 College student 3C1P talent growth Calendar(Culture/Companionship)



★ 3C1P: GIST College's educational philosophy is summarized in the 3Cs of Communication, Cooperation, and Creativity and the 1P of Problem-Solving.

Categories	Program	Program Content	Target Students	Operating Period												Selection Notes	Key benefits (School Support)	Departments	Contact person in charge (phone, email)	Other notes		
				Jan	Feb	Mar	Apr	May	Jun	Jul	Aug	Sep	Oct	Nov	Dec							
STUDENT EVENTS (FESTIVALS, ETC.)	Student Festival (LUMIERE)	Student unity and festival event	All students				Plan						Hold (To be confirmed later)				Student Service Team Student Association Club Association	Ext. 3605 kimsj0129@gist.ac.kr	Consult student government			
	Stadiums	Sports and club performances at all five IST schools	All students											Plan	Hold (DGIST)	Applicant	Student Service Team Club Association					
	Summer cultural events	Club performances, hands-on booths, and more to bring everyone together	All students				Plan	Hold									Student Service Team GIST Cluture&Event Committee	Ext. 3605 kimsj0129@gist.ac.kr				
	House Thrift Shop	Immediately following the opening of the class, the entire team will be able to share the necessary thrift items	All students		Plan	Hold												Student Service Team House Association	Ext. 3606 soopark@gist.ac.kr			
	House Spring "Cherry Blossom Event"	Bonding events	All students			Plan Hold																
	House Summer 'Lucky House'	Unity through a variety of minigames	All students				Plan	Hold														
	House Autumn "Night Market"	Club performances, hands-on booths, and more to bring everyone together	All students										Plan	Hold								
CULTURAL EXCHANGES	Culture Night	International student-led multicultural events	All students									Plan			Hold		International and Public Affairs Team (IPAT)	Ext. 6256 yoonseoroh@gist.ac.kr				
	Doran Doran (Language Exchange Program)	Promoting interaction between Korean and international students Connect with your native language and culture with Korean students	All students												Execution	~10 people	Office of Academic Plan	Undefined				
MENTORING & VOLUNTEER SERVICES	Companion Programs	Foster cultural exchange among international members	All students				Selection	Program progress									IPAT	Ext. 6256 yoonseoroh@gist.ac.kr				
	NIA World Friends ICT Corps	Overseas volunteer service such as IT and Korean culture education	All students				Announce-ment	Selection	Education	Dispatch						4 members /Team, ~3 teams	IPAT	Ext. 6253 kcsda@gist.ac.kr				
	Traveling Science Camps	Science education for rural youth	All students (PIUM)					Selection	Hosting			Selection	Hosting				IPAT, PIUM	Ext. 2026 yeongjlee@gist.ac.kr				
	LAN Mentoring	Learning and advancement for middle and high school students in underserved areas	All students (PIUM)			Plan	Participation									IPAT, PIUM						
	International New Student Buddy Program	Life in Korea as an International Baccalaureate Student Adaptive support (1:1)	All students									Selection	Participation			~10 people	activity expenses, operation expenses (KRW 200,000/team)	IPAT, Div of Liberal Arts and Sciences	Ext. 6254 kjssoony607@gist.ac.kr			
CLUB ACTIVITIES	Create a new club	Support for extracurricular activities	All students	All year round														Student Service Team	Ext. 3605 kimsj0129@gist.ac.kr			
						Club registration guide, Evaluation			Club funding distribution and activities													

■ The 3C1P Talent Growth Support Calendar aims to provide an overview of all programs, and detailed schedules may vary depending on internal and external circumstances. Please refer to each respective department for specific details on individual programs

